

CONFIGURATION OPTIONS

Amada Miyachi Europe has developed a product configurator and a 3-D drawing module which allow for convenient configuration and visualisation of the different components.



newhorizon

Weld Heads and Weld Pincers

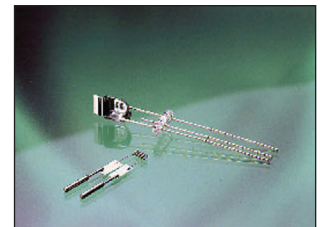
The newhorizon weld heads and weld pincers are a complete range of weld heads in the force range of 40- to 1100 Newton. The revolutionary design offers extreme stiffness for optimum and constant welding performance. Accessibility from one side only, dust sealing, and easy exchange of modules lower the cost of ownership.

The newhorizon weld heads and pincers are configured with 24 different basic modules to form up to 400 different weld heads. These weld heads form three basic families i.e. weld head for automation, bench weld heads, and weld pincers. Our weld specialists have the tools to help you configure the optimum weld head for your application. 3D modules are available to help integrate the newhorizon weld head into your system or work area. newhorizon weld heads offer optimal serviceability.

TYPICAL APPLICATIONS



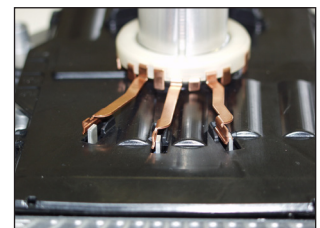
Electronics



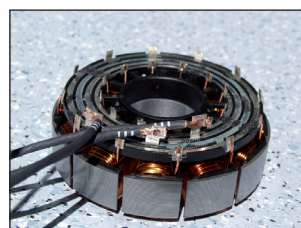
Electronics



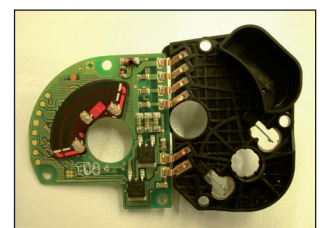
Medical



Automotive



Automotive



Automotive



- Valuable Customer Feedback meets MIYACHI PECO expertise
- Modularity and open architecture offer versatile solutions
- Flexible configuration facilitates customisation and upgrades
- Lower cost of ownership thanks to ease of maintenance and reduced spare part ordering and storage complexity
- Strong brands from a global player ensure international coverage
- Unique solutions are available for many industry markets with optional displacement sensor(s)
- Modular design allows for wide range of products with short delivery times
- One-side accessibility and exchange of modules for low maintenance costs
- High stiffness for optimal weld performance
- Availability of 3D models in CAD file drawing format for easy integration
- Choice of Direct drive servo module or two stroke cylinder actuation
- New electrode holder design for fast changeover, perfect stiffness and energy flowvv



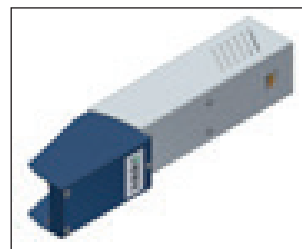
Guide box



Pneumatic module



Servo module



Housing

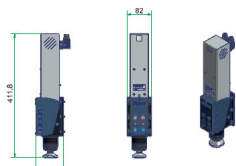
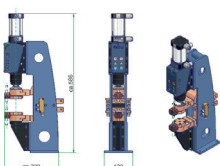
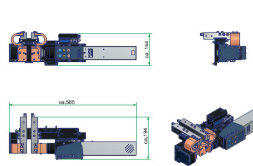


Quick changer

TECHNICAL SPECIFICATIONS

	Weld head for automation	Weld head for bench type	Weld pincer
Configuration	Without Stand	With Stand	Floating, 1 position stroke or 2 position floating
Options	See MIYACHI PECO product configurator		
Electrode stroke	30 mm		
Locking stroke	n/a		5 mm max
Floating stroke	n/a		30 mm
Closing stroke	Pneumatic 2-stroke cylinder or motorized actuation		
Welding force pneumatic: FP400 or FP-400-Z FP700 or FP700-Z FP1100 or FP1100-Z Servo motorised: MFP400 or MFP400-Z MFP800 or MFP800-Z	150 - 400 N 280 - 700 N 400 - 1100 N 60 - 400 N 160 - 800 N		
Lower Stroke Unit Force	Pneumatic; 30 mm stroke; 1600 N		n/a
Air pressure supply	6 Bar max for pneumatic act. VL40R or VLPV needed		n/a
Force adjustment pneumatic head	Via adjustable pressure control or proportional valve		
Force adjustment motorised head	Via motor controller		
Electrode shape	See MIYACHI PECO product configurator		
Electrode holder	Quick change electrode holder		
Secondary cables	95, 300 or 500 mm² in various lengths		
Environment temp.	0 - 40° C		

WEIGHT & DIMENSIONS

	Weld head for automation	Weld head for bench type	Weld pincer
Weight Pneumatic: FP400, FP700, FP1100, MFP400-Z, FP700-Z, FP1100-Z Motorised: MFP400, MFP800, MFP400-Z, MFP800-Z	4 kg 5 kg	14 kg 15 kg	19 kg 20 kg
Drawings Pneumatic: FP400, FP700, FP1100, FP400-Z, FP700-Z, FP1100-Z Servo Motorised: MFP400, MFP800, MFP400-Z, MFP800-Z			



Lindberghstrasse 1 • DE-82178 Puchheim, Germany
 T: +49 (0) 89 83 94 030 • Fax : +49 (0) 89 839403 68
 info@amadamiyachi.eu • www.amadamiyachieurope.com
 ISO 9001 Certified Company

MIYACHI **MIYACHI** **MIYACHI**
UNITEK **PEGO** **IA PRO**

EUROPE

Amada Miyachi Europe BV
 Helmond, The Netherlands
 T: +31 (0) 492 542 225
 info@amadamiyachi.eu

Amada Miyachi Europe Kft.
 Budapest, Hungary
 T: +36 1 431 9927
 infohu@amadamiyachi.eu

Amada Miyachi Europe
 Derby, United Kingdom
 T: +44 (0) 1332 361 238
 info@amadamiyachi.eu

Amada Miyachi Europe
 Saint Germain en Laye, France
 T: +33 (0) 139 046 430
 infofr@amadamiyachi.eu

Amada Miyachi Europe
 Torino, Italy
 T: +39 011 223 83 16
 infoit@amadamiyachi.eu

Amada Miyachi Europe
 Prague-West, Czech Republic
 T: +420 251 512 157
 info@amadamiyachi.eu

AMERICAS

Amada Miyachi America Inc.
 Monrovia, CA, USA
 T: +1-626-303-5676
 info@amadamiyachi.com

Amada Miyachi do Brasil Ltda.
 Sao Paulo, Brasil
 T: +55-11-4193-1187
 antonio.ruiz@miyachi.com

ASIA

Amada Miyachi Co., Ltd.
 Noda, Japan
 T: +81-4-7125-6177
 sales@miyachi.com

Amada Miyachi Shanghai, Co., Ltd.
 Shanghai, China
 T: +86-21-6448-6000
 zqzhang@msc.miyachi.com

Amada Miyachi Korea Co., Ltd.
 Gyeonggi-do, Korea
 T: +82-31-8015-6810
 dykim@mkc.miyachi.com

Amada Miyachi Taiwan Co., Ltd.
 Taipei, Taiwan R.O.C.
 T: 886-2-2397-4778
 keigaku@miyachi.com

Amada Miyachi (Thailand) Co., Ltd.
 Samutprakarn, Thailand
 T: +66-2751-9337-8
 info@mtl.miyachi.com

Amada Miyachi Vietnam Co., Ltd.
 Ho Chi Minh City, Vietnam
 T: +84-8-3771-7972

Amada Miyachi India Pvt., Ltd.
 Bangalore, Karnataka
 info@miyachiindia.com

All data, images and text are subject to change at any time. Amada Miyachi Europe GmbH reserves the right to change, modify, delete and add technical specifications and product details at any time without prior notification. © 2015 Amada Miyachi Europe GmbH.

follow us on:

