



# ML-73 D Series

## Yb: Fiber Laser Markers

The ML-73 D Series laser markers combine cutting-edge technology with industrial robustness for a wide range of marking applications. This versatile series has numerous performance options to match the right laser to the application. The system is designed with multiple integration options to suit standalone operation, full production automation and prototype development. Owners of the ML-73 D Series also benefit from our commitment to providing industry-leading customer support.

### TYPICAL APPLICATIONS

The ML-73 D Series is composed of galvo scan head markers used for marking metals, plastics and ceramics. Typical applications can be found in the medical industry, automotive and electronic components.

### KEY FEATURES

- 10-100W fiber laser markers
- High-power, high-speed laser marking system for metals, plastics, and ceramics
- Excellent contrast and crispness of annealed and engraved marks
- Air-cooled, sealed industrial package designed for operation in harsh environments
- Powerful control software with industry standard programming
- Multiple integration options to match application needs
- Meets International Safety Standards IEC13849-1 category 3 PLd
- Marker motion unit comes with integrated stage controllers for up to 4 axes



Medical tools & instruments



Implantable medical devices



Metal engraving for automotive and UDI applications



Electrical components



Plastic housings



Cutting of thin metals


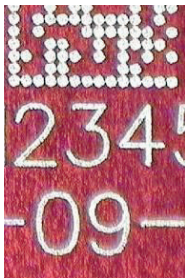


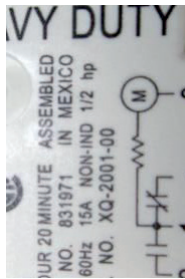
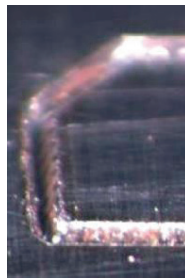



## MARKER SELECTION GUIDE

We offer a wide range of lasers to correctly match any marking application. The table below highlights the choices in laser power and typical applications for each laser. Contact us about free feasibility samples for your application.

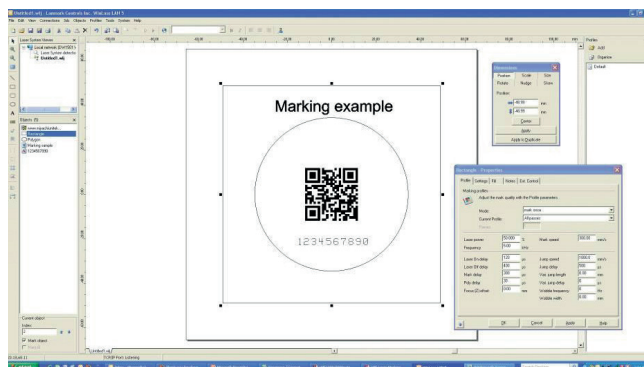
### LASER/SYSTEM SPECIFICATIONS

	F-THETA OUTPUT LENS			
	100 mm	160 mm	254 mm	420 mm
Field Size (mm)	62 x 62	99 x 99	157 x 157	291 x 291
Working Distance*)	98 ± 1 mm	176 ± 2 mm	296 ± 3 mm	494 ± 5 mm
Lens Diameter (mm)	90	90	120	120
Wavelength	1064 nm ± 5 nm			
Nominal Power/ Frequency Range	ML-7310D – 10W/20-200 kHz ML-7321D – 20W/20-200 kHz ML-7320D – 20W/2-500 kHz, CW ML-7322D – 20W/2-500 kHz, CW (Single mode) ML-7340D – 35W/2-500 kHz, CW ML-7350D-50W/50-200 kHz ML-7310D-HP– 100W/5-200 kHz			
Guide Laser	Diode 630-650 nm			
*) working distance is the distance from the focus point to the lens assembly (52mmx52mm) for 35W version				

ML-7310D	ML-7321D	ML-7322D	ML-7320D	ML-7340D	ML-7350D	ML-7310D-HP
10W Basic Marking System	20W Marking System	20W Precision Marking System	20W Marking System	35W Advanced Marking System	50W Marking and Engraving System	100W Marking and Engraving System
						
General marking on plastics and metals	Marking on metals	Precision marking for smallest feature size	Marking on metals and plastics	Marking on plastics and large area annealing	Engraving of stainless Steel	High speed marking of aluminum

## SOFTWARE FEATURES

- Powerful, user-friendly Windows® based job editor
- WYSIWYG “what-you-see-is-what-you-get” editing
- Easy to import graphics
- Multi-Language support
- Advanced DXF filter with process optimization
- Password protected security lockout
- Touch Screen GUI Enabled
- Windows XP and Windows 7 compatible



## MARKING OPTIONS

- Galvanometric scanner, XY - Standard
- XYZ and rotary stages (Optional)
- Automation: I/O control, 4-axis motor control, time delays, and custom operator messages
- On-the-fly (Optional)

Accepted file types:

.dxf, .dwg, .plt, .emf, .wmf, .bmp, .jpg, .gif, .cdr and .ai

## MARKER MOTION

Marking systems are often required to control one or more motors or actuators to execute complex production sequences. The ML-73 D Series has an integrated motion system allowing the user to control up to four stepper motors (typically XYZ and Rotary) with integrated controllers using a the Winlase software interface for easy configuration and control without extensive hardware requirements.

- Step and repeat marking.
- Focal plane height adjust - Adjust the height of the marker head to pre-programmed static positions to accommodate marking surfaces at different heights above the tooling plane.
- Rotary - Rotate a circular cylindrical part while marking to ensure mark completely wraps around part with no distortion or areas out of focus.

## MARK TYPES

- Line-art graphics: CAD, line-drawings, logos
- Shaded graphics: photos, halftones & grayscale artwork
- TrueType™ fonts, filled or outline-only
- Single point or drill object arrays
- 1D and 2D (Data Matrix and QR code) barcodes
- AutoDate™, TextMerge™, serialization, and barcode



Scan QR code for a link to a video demonstration

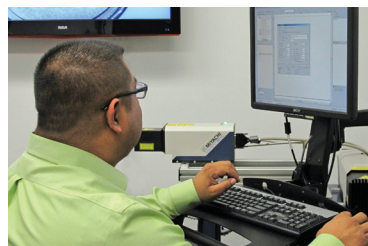


## SYSTEM INTEGRATION

We offer the widest range of integration options to match any marking/engraving application. Whether working in a job shop or fully automated production line. Our markers are designed with the integrator in mind and include several input/output options including RS-232, Ethernet, and safety interlocks. In addition, we offer a wide range of accessories for marking workstations including standard and custom Class 1 enclosures.



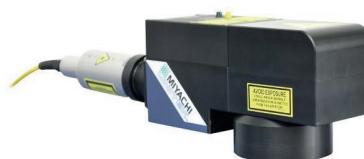
*Standard and custom Class 1 enclosures available (entry level enclosure shown)*



## CONTROLLED BY PC/TOUCHSCREEN INTERFACE

Ideal for:

- Small lot marking
- Application labs/ job shops
- Jobs with barcode scanners
- Semi-automatic workstations



## CONTROL THROUGH PLC

Ideal for:

- Production lines
- Machine controlled processes
- Low-level operators
- High speed and part throughput
- On-the-fly marking

## TECHNICAL SPECIFICATIONS

Parameter	Value
Pump source	Laser Diode
AC Power	Single Phase, 90-130 VAC/180-260 VAC, 50/60 Hz, 10A
Environment Temperature	15°- 40° C*
Environment Humidity	Less than 90% RH (non-condensing)
Cooling	Air cooled

\*15°-35°C for ML-7310D, ML-7321D, ML-7322D, ML-7320D, ML-7340D and ML-7350D

## WEIGHT - DIMENSIONS

	Controller	ML-73D Series Controller	Microhead
Dimensions HxWxD (mm)	670,9 x 431,8 x 186,1	939.8 x 520.7 x 825.5	215.6 x 77 x 107.2
Controller Weight (in kg)	27,7	90.9 kg	3.8 kg



AMADA MIYACHI EUROPE

Lindberghstrasse 1 • DE-82178 Puchheim, Germany  
T: +49 (0) 89 83 94 030 • Fax: +49 (0) 89 839403 68  
info@amadamiyachi.eu • www.amadamiyachieurope.com  
ISO 9001 Certified Company

### EUROPE

Amada Miyachi Europe BV  
Helmond, The Netherlands  
T: +31 (0) 492 542 225  
info@amadamiyachi.eu

Amada Miyachi Europe Kft.  
Budapest, Hungary  
T: +36 1 431 9927  
info@amadamiyachi.eu

Amada Miyachi Europe  
Derby, United Kingdom  
T: +44 (0) 1332 361 238  
info@amadamiyachi.eu

Amada Miyachi Europe  
Saint Germain en Laye, France  
T: +33 (0) 139 046 430  
info@amadamiyachi.eu

Amada Miyachi Europe  
Torino, Italy  
T: +39 011 223 83 16  
info@amadamiyachi.eu

Amada Miyachi Europe  
Prague-West, Czech Republic  
T: +420 251 512 157  
info@amadamiyachi.eu

### AMERICAS

Amada Miyachi America Inc.  
Monrovia, CA, USA  
T: +1-626-303-5676  
info@amadamiyachi.com

Amada Miyachi do  
Brasil Ltda.  
Sao Paulo, Brasil  
T: +55-11-4193-1187  
antonio.ruiz@miyachi.com

### ASIA

Amada Miyachi Co., Ltd.  
Noda, Japan  
T: +81-4-7125-6177  
sales@miyachi.com

Amada Miyachi  
Shanghai, Co., Ltd.  
Shanghai, China  
T: +86-21-6448-6000  
zqzhang@msc.miyachi.com

MIYACHI UNITEK | MIYACHI P E C O | MIYACHI I A P R O

Amada Miyachi  
Korea Co., Ltd.  
Gyeonggi-do, Korea  
T: +82-31-8015-6810  
dykim@mkc.miyachi.com

Amada Miyachi  
Taiwan Co., Ltd.  
Taipei, Taiwan R.O.C.  
T: 886-2-2397-4778  
keigaku@miyachi.com

Amada Miyachi  
(Thailand) Co., Ltd.  
Samutprakarn, Thailand  
T: +66-2751-9337-8  
info@mtl.miyachi.com

Amada Miyachi  
Vietnam Co., Ltd.  
Ho Chi Minh City, Vietnam  
T: +84-8-3771-7972

Amada Miyachi  
India Pvt., Ltd.  
Bangalore, Karnataka  
info@miyachiindia.com

follow us on:



All data, images and text are subject to change at any time. Amada Miyachi Europe GmbH reserves the right to change, modify, delete and add technical specifications and product details at any time without prior notification. © 2015 Amada Miyachi Europe GmbH.