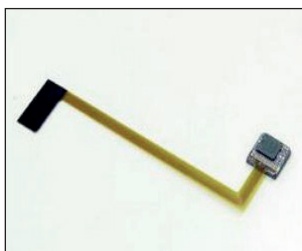


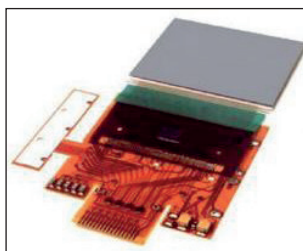
KEY FEATURES

- Compact and flexible standard systems for high quality connections
- Ideal price-performance (throughput) ratio
- Robust frame construction
- User friendly system configuration including optional plug & play modules
- Integrated Constant Heat process control based on proven technology
- Included in standard system configuration:
 - X-Y Hot Bar Planarity Adjustment
 - Electronic Temperature & System Control
 - Pneumatic Bond Head
 - Digital Bond Force Readout
 - CE Approved

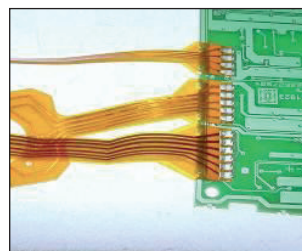
TYPICAL APPLICATIONS



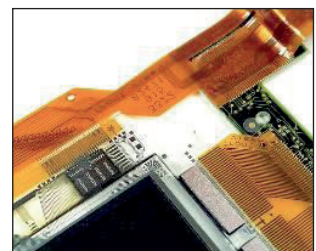
CCD Camera



Multiple Flex



Flex - PCB



LCD Display

newhorizon

Constant Heat Heat-Seal / ACF Final Bonding System

Heat-Seal / ACF Final Bonding is the process of creating electrical conductive adhesive bonds between flexible and rigid circuit boards, glass panel displays and flex foils. This interconnection technique is mostly used for connecting displays to PCB's.

The Heat-Seal / ACF Final Bonding systems are an integral part of the MIYACHI EAPRO Hot Bar series using Constant Heat technology through the integrated system temperature controller, a pneumatic Bond Head and customized thermodes.

The newhorizon product range includes various models with different product handling features such as linear slides and rotary tables. The systems are designed considering ergonomic standards offering maximized production output. All process parameters are embedded into the system, ensuring consistent process quality and operator independence.

The newhorizon systems enable full automatic process control with manual (un-)loading of parts. Each system can be adapted to suit the customer's technical requirements through extension with optional plug & play modules. All modules are mounted on a robust frame construction. The system offers the best stability supporting applications down to the finest pitch.



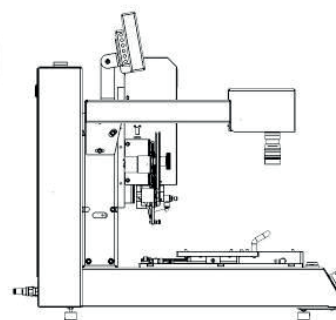
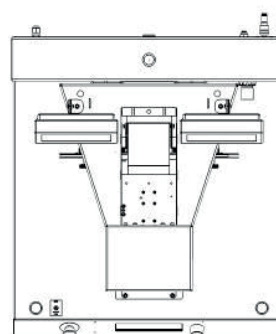
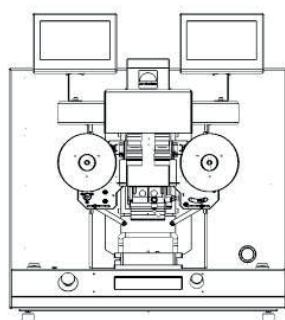
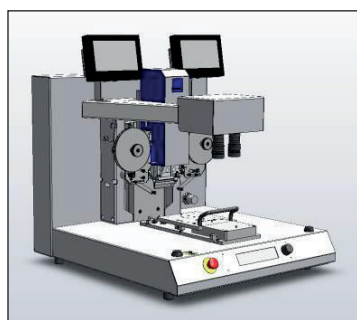
TECHNICAL SPECIFICATIONS

Power requirements	100-240 VAC / Single Phase / 50/60 Hz (16 Amps max)
Air supply	6 – 8 bar [87 – 116 psi], clean dry & filtered air
Fixture assembly baseplate dimensions	150 x 150 mm
Fixture weight	1.0 kg Max (per product fixture)
Constant heat thermode size (length x width)	Min 3 x 1 mm / Max 75 x 5 mm
Starting operation	Two hand control
Start-up time	< 5 minutes
Operating temperature	15 – 40 °C
Operating humidity	Max 93% @ 40 °C
Certification	CE Approved
Bonding head & temperature controller technical specifications	
Force range	60 – 750 N @ 6 Bar
Bond head stroke (max)	45 mm
Bond level height	40 mm
Free z space for components	20 mm
Temperature range	50 - 300 °C Constant Heat
Temperature control accuracy	± 2% of Full Scale
Bond time period	0,5 to 99,9 seconds
Model specifications	
MHSB-3100 base	No movement
MHSB-3200 linear slide (manual 2-position front-rear slide)	Stroke between front and bonding position: 200 mm fixed
MHSB-3300 rotary table (manual 2-position)	Turntable diameter: 380 mm
MHSB-3400 automatic rotary table (pneumatic 2-position)	Turntable diameter: 380 mm Turntable movement time: < 2 seconds

WEIGHT & DIMENSIONS

Dimensions HxWxD (mm)	650 x 615 x 695
Weight	60 kg

IMAGES & DRAWINGS



Lindberghstrasse 1 • DE-82178 Puchheim, Germany
T: +49 (0) 89 83 94 030 • Fax: +49 (0) 89 839403 68
info@amadamiyachi.eu • www.amadamiyachieurope.com
ISO 9001 Certified Company

MIYACHI | **MIYACHI** | **MIYACHI**
UNITEK | **PEGO** | **EAPRO**

EUROPE

Amada Miyachi Europe BV
Helmond, The Netherlands
T: +31 (0) 492 542 225
info@amadamiyachi.eu

Amada Miyachi Europe Kft.
Budapest, Hungary
T: +36 1 431 9927
infohu@amadamiyachi.eu

Amada Miyachi Europe
Derby, United Kingdom
T: +44 (0) 1332 361 238
info@amadamiyachi.eu

Amada Miyachi Europe
Saint Germain en Laye, France
T: +33 (0) 139 046 430
infofr@amadamiyachi.eu

Amada Miyachi Europe
Torino, Italy
T: +39 011 223 83 16
infoit@amadamiyachi.eu

Amada Miyachi Europe
Prague-West, Czech Republic
T: +420 251 512 157
info@amadamiyachi.eu

AMERICAS

Amada Miyachi America Inc.
Monrovia, CA, USA
T: +1-626-303-5676
info@amadamiyachi.com

Amada Miyachi do Brasil Ltda.
Sao Paulo, Brasil
T: +55-11-4193-1187
antonio.ruiz@miyachi.com

ASIA

Amada Miyachi Co., Ltd.
Noda, Japan
T: +81-4-7125-6177
sales@miyachi.com

Amada Miyachi Shanghai, Co., Ltd.
Shanghai, China
T: +86-21-6448-6000
zqzhang@msc.miyachi.com

Amada Miyachi Korea Co., Ltd.
Gyeonggi-do, Korea
T: +82-31-8015-6810
dykim@mkc.miyachi.com

Amada Miyachi Taiwan Co., Ltd.
Taipei, Taiwan R.O.C.
T: 886-2-2397-4778
keigaku@miyachi.com

Amada Miyachi (Thailand) Co., Ltd.
Samutprakarn, Thailand
T: +66-2751-9337-8
info@mtl.miyachi.com

Amada Miyachi Vietnam Co., Ltd.
Ho Chi Minh City, Vietnam
T: +84-8-3771-7972

Amada Miyachi India Pvt., Ltd.
Bangalore, Karnataka
info@miyachiindia.com

follow us on:



All data, images and text are subject to change at any time. Amada Miyachi Europe GmbH reserves the right to change, modify, delete and add technical specifications and product details at any time without prior notification. © 2015 Amada Miyachi Europe GmbH.