



AF-8500A Lid Placement, Tack and Seam Sealing System (formerly known as AF8500)

The Auto flow system is flexible enough to meet the ever-increasing demands of lid placement and seam-sealing applications as seen in the optoelectronic packaging industry. It can be configured either as a stand-alone unit or as part of a fully-integrated, automated manufacturing line. The computer-controlled precision tacking and seam-sealing mechanism is combined with a high-frequency inverter welding power supply and an optional high-resolution vision system to provide a robust and repeatable process. Auto flow can also be incorporated into an atmospheric enclosure to provide an integrated seam sealing glove box system, ensuring high-yield hermetic sealing results.

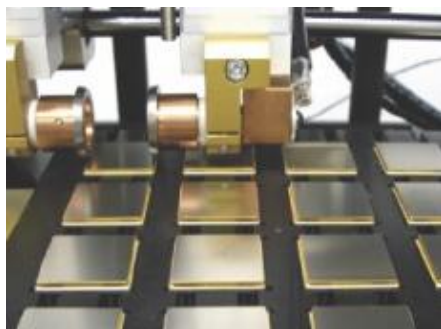
Key features AF-8500A Lid Placement, Tack and Seam Sealing System

- Programmable electrode force and weld current using a Windows®-based proprietary software
- Closed-loop high frequency inverter welding power supply features low sealing temperatures and power feedback, increasing yields and productivity
- Current control mode optimized for superior seam sealing results
- Position-based weld pulses ensure consistent spot spacing, optimized spot density at corners, reduced leaks, and elimination of acceleration/deceleration problems
- Auto-Trak™ software indexes electrodes ensuring extended electrode life and more even wear
- Electrode roll-back feature assists in electrode release from lightweight parts
- Automated lid alignment and placement option holds lid in place during tacking, preventing misalignment; easy-to-program vision software
- Automated magazine loader option loads from either top or bottom for a fully or semi-automated part handling system

Specifications AF-8500A Lid Placement, Tack and Seam Sealing System (formerly known as AF8500)

| | |
|---|--|
| Part size with vision, pick-place and tack | 0.118 in - 4.3 in (3 mm - 110 mm) |
| Part size without vision and pick-place | 0.118 in - 8 in (3 mm - 203 mm) |
| Lid placement accuracy | +/-0.003 in (+/-0.08 mm) |
| Weld force (programmable) | 500 to 3000 grams (1g increments) |
| Linear weld speed | 0.01 to 1.5 in/sec (0.01 increments) |
| HF-2500A current output | 100 to 2400 amps, ± 2 amps |
| HF-2500A pulse width | 0.10 to 99.00 milliseconds (0.01 increments) |
| Input power - HF-2500A power supply | 192 - 264 VAC (240 V nominal), 3 Ph, 50/60 Hz, 25 amps 320 - 440 VAC (400 V nominal), 3 Ph, 50/60 Hz, 20 amps 384 - 528 VAC (480 V nominal), 3 Ph, 50/60 Hz, 13 amps |
| Mechanism input power | Autovolt 110 to 240 VAC 50/60 Hz single phase 15 amp |
| Compressed gas requirements | 60 psi minimum |
| Calibration | To NIST standards / CE certified |
| Dimensions (L x W x H) AF-8500A mechanism | 712 mm x 712 mm x 432 mm (28 in x 28 in x 17 in) |
| Weight AF-8500A mechanism | 55 kg (120 lbs) |
| Dimensions (L x W x H) AF-1250A mechanism with control box | Mechanism - 762 mm x 712 mm x 432 mm (30 in x 28 in x 17 in) Control box - 280 mm x 381 mm x 356 mm (11 in x 15 in x 14 in) |
| Weight AF-1250A mechanism with control box | 66 kg (145 lbs) |
| Dimensions (L x W x H) HF-2500A power supply | 413 mm x 235 mm x 331 mm (17 in x 10 in x 13 in) |
| Weight HF-2500A power supply | 24.5 kg (54 lbs) |

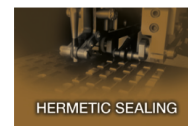
Product applications AF-8500A Lid Placement, Tack and Seam Sealing System (formerly known as AF8500)



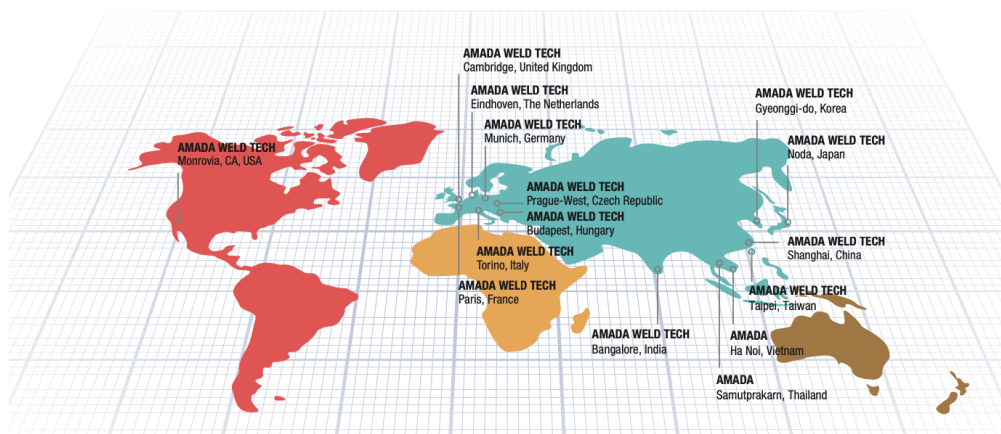
AMADA[®]

AMADA WELD TECH

OUR TECHNOLOGIES



OUR SALES OFFICES



AMADA WELD TECH GmbH
Lindberghstrasse 1 • DE-82178 Puchheim, Germany
T: +49 (0) 89 83 94 030 • Fax : +49 (0) 89 839403 68
info@amadaweldtech.eu • www.amadaweldtech.eu
ISO 9001 Certified Company

Please contact our worldwide
network here:



follow us on:



All data, images and text are subject to change at any time. AMADA WELD TECH GmbH reserves the right to change, modify, delete and add technical specifications and product details at any time without prior notification. © 2020 AMADA WELD TECH GmbH.

WWW.AMADAWELDTECH.EU