



## SM-8500A Parallel Seam Sealing System (formerly known as SM8500)

Packed with advanced features, the Windows®-based SM-8500A, reliably performs hermetic resistance welding, brazing, and soldering processes on a variety of metals, alloys, plated materials, and solder pre-forms. SM8500 can be operated as either a stand-alone unit or fully integrated into a glovebox enclosure for a complete closed-loop hermetic sealing process for applications that include optoelectronic packaging, semiconductor packaging, transistor outline package welding.

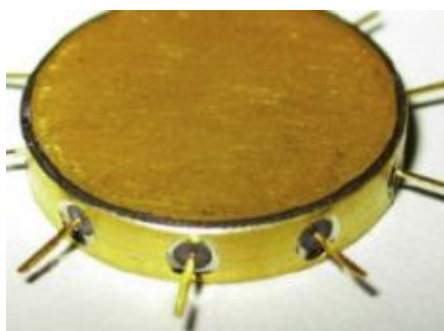
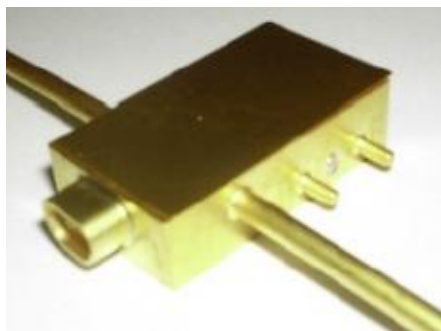
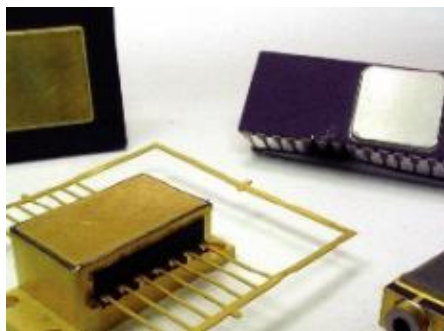
### Key features SM-8500A Parallel Seam Sealing System

- Utilizes the advanced HF-2500A 25 kHz closed-loop feedback weld power supply
- Programmable electrode force enables user to optimize both force and energy
- Indexed electrodes ensure extended, even wear providing superior results
- Position-based weld pulses provide increased or decreased energy at part corners reducing corner leaks
- Electrode roll-back feature facilitates electrode release from light weight parts
- Circular mode seam sealing allows processing of round parts

## Specifications SM-8500A Parallel Seam Sealing System (formerly known as SM8500)

<b>Part size</b>	0.158 in to 8 in (4 mm to 203 mm)
<b>Position encoder resolution</b>	X – 20,000 cts/in,
<b>Position encoder resolution</b>	Y – 40,000 cts/in
<b>Weld force (programmable)</b>	500 to 5000 grams
<b>Linear weld speed</b>	0.01 to 1.5 in/sec
<b>Rotary weld speed</b>	0.01 to 1.5 linear- in/sec (720° max. rotation)
<b>Input gas requirements</b>	60 psi minimum
<b>Input power - HF-2500A power supply</b>	Three phase, 192-264 VAC (240 V nominal), 50/60 Hz, 25 a Three phase, 320-440 VAC (400V nominal), 50/60 Hz, 20 A Three phase, 384-528 VAC (480 V nominal), 50/60 Hz, 13 A
<b>HF-2500A current output</b>	100 to 2400 A, ±2 A
<b>HF-2500A pulse width</b>	0.10 to 99.00 ms
<b>Mechanism input power</b>	Single phase, autovolt 110 to 240 VAC 50/60 Hz, 15 A
<b>Calibration</b>	To NIST standards   CE Certified
<b>SM-8500A Mechanism Dimensions (L x W x H)</b>	584 mm x 559 mm x 470 mm (23.0 in x 22.0 in x 18 in)
<b>SM-8500A Mechanism Weight</b>	38.5 kg (85 lb)
<b>HF-2500A Power Supply Dimensions (L x W x H)</b>	413 mm x 235 mm x 330 mm (16.25 in x 9.25 in x 13.0 in)
<b>HF-2500A Power Supply Weight</b>	24.5 kg (54 lb)

Product applications SM-8500A Parallel Seam Sealing System (formerly known as SM8500)



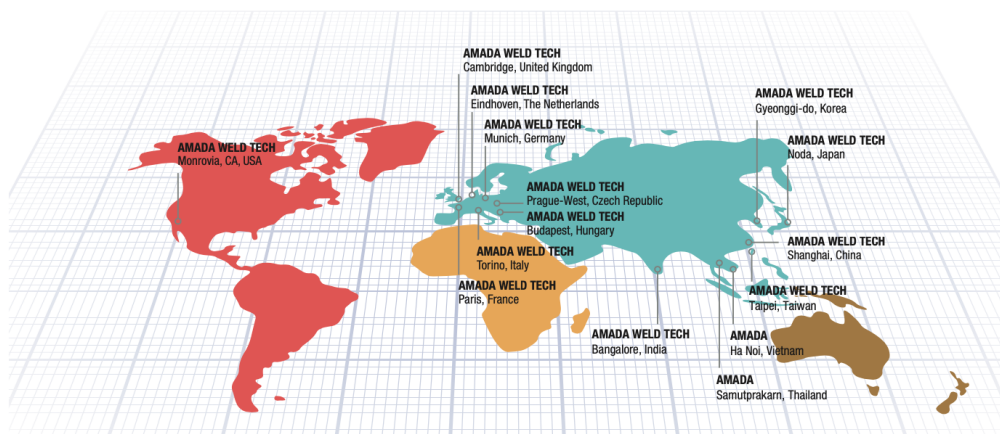
# AMADA®

## AMADA WELD TECH

### OUR TECHNOLOGIES



### OUR SALES OFFICES



**AMADA WELD TECH GmbH**  
Lindberghstrasse 1 • DE-82178 Puchheim, Germany  
T: +49 (0) 89 83 94 030 • Fax : +49 (0) 89 839403 68  
info@amada-weldtech.eu • www.amada-weldtech.eu  
ISO 9001 Certified Company

Please contact our worldwide  
network here:



follow us on:



All data, images and text are subject to change at any time. AMADA WELD TECH GmbH reserves the right to change, modify, delete and add technical specifications and product details at any time without prior notification. © 2020 AMADA WELD TECH GmbH.

**WWW.AMADAWELDTECH.EU**