

## Miyachi Fiber Laser Welder ML-6500B, ML-6700A, ML-6810A

### Benefits

- Small focus with longer focal lengths
- Higher efficiency than lamp pumped systems
- Plug and play systems
- Estimated diode life time > 100.000 hours
- Integrated internal chiller
- Integrated beam splitter (up to three outputs)
- Energy share or time share available
- Outstanding BPP



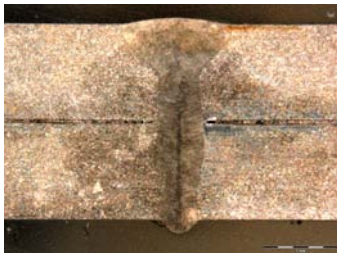
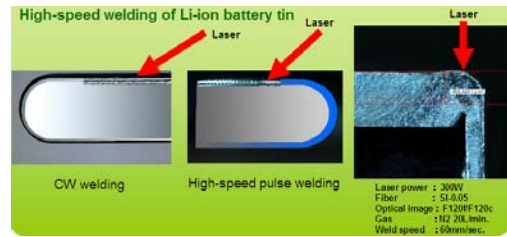
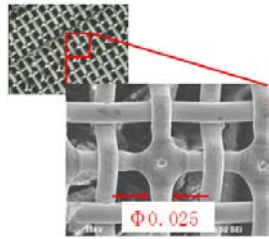
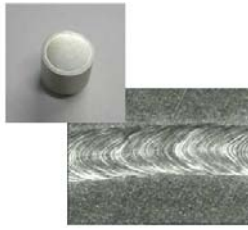
### Technical Specifications

	ML-6500B	ML-6700A	ML-6810A
Max. rated output	300W	500W	1000W
Power requirements	3-phase, 200V to 400V AC (+10%/-15%) , 50/60Hz		
Breaker rated current	20A (380V/400V)	30A (380V/400V)	50A (380V/400V)
Cooler	Water – Water		
Weight	240kg	250kg	380kg
Safety Class	Class 4 laser, pilot laser: Class 1		
Legal Approval	CE compliant		

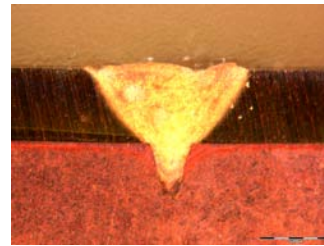
### Features

- CW / Pulse selectable
- Pulse : 1 to 5000PPS
- Fiber diameter: SI 0.05 – 1 mm
- Environment: 5 to 50° C with humidity 50 to 85%
- IP 54

## Applications



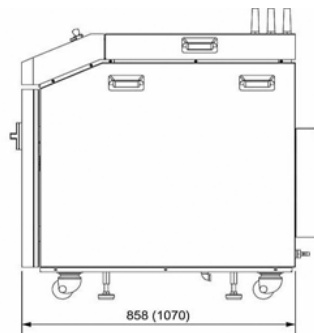
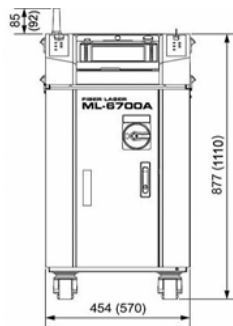
1.4301 Overlap 2 sheets (each 1.25 mm thick) @1kW



CuSn6 0.5 mm overlap with 4 mm E-Cu – 20 mm/s @1kW

- Fine cutting of metals
- Brazing applications
- Cladding applications
- Welding of stainless steel 2 mm +; CuSn6 etc.

## Drawings ML-6500B and ML-6700A, ( ) = ML-6810A only



( ) = ML-6810A only

Local Representative

### Contacts

○ Miyachi Europe B.V.  
Schootense Dreef 21  
5708 HZ Helmond  
The Netherlands  
Tel. : +31 (0)492 542 225  
Fax : +31 (0)492 536 222

○ Miyachi Europe UK  
16 Royal Scot Road  
Pride Park DE24 8AJ Derby  
United Kingdom  
Tel. : +44 (0)1332 361 238  
Fax : +44 (0)1332 206 215

○ Miyachi Europe Kft.  
Szent Laslo Ter 20  
H-1102 Budapest  
Hungary  
Tel. : +361 431 9927  
Fax : +361 260 9175

○ Miyachi Europe GmbH  
Lindberghstrasse 1  
D-82178 Puchheim  
Germany  
Tel. : +49 (0)89 83 94 030  
Fax : +49 (0)89 83 94 0310

○ Miyachi Europe  
Tyrsova 2084  
252 28 Cernosice/Prague-West  
Czech Republic  
Tel. : +420 251 512 157  
Fax : +420 251 512 158

○ Miyachi Europe GmbH  
Strada della Cebrosa, 86  
10156 Torino  
Italy  
Tel. : +39 (011)223 83 16  
Fax : +39 (011)274 94 66

○ Miyachi Europe  
95D rue Péreire  
Saint Germain en Laye, 78100  
France  
Tel. : +33 139 046 430  
Fax : +33 130 617 547

[WWW.MIYACHIEUROPE.COM](http://WWW.MIYACHIEUROPE.COM)

All data, images and text described and illustrated in this technical data sheet are subject to change. Miyachi Europe reserves the right to modify the specifications, the design and the illustrations at any time. All rights reserved – January 2010